

The Fully Integrated TDM Solution for  GIBBSCAM



Get a **FREE** 14 day trial.

Discover the benefits of *better*.

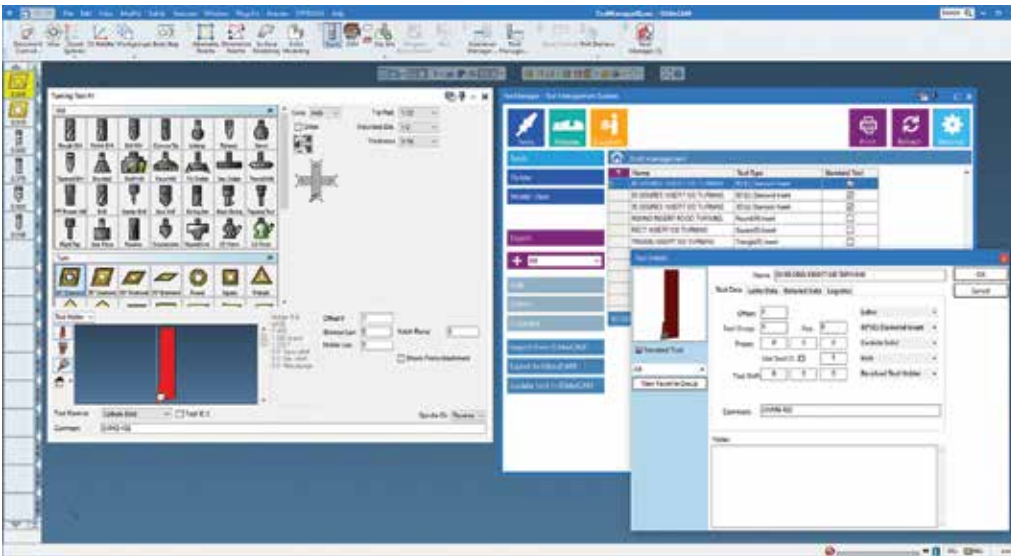


Visit ToolManagerIQ.com or call 1-888-289-5617.

A SQL database that manages cutting tools, tool holders, tool assemblies, fixtures, and suppliers.

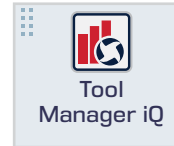
Now that's better.

A common challenge all CNC programmers experience is handling tools, tool holders, and fixture models efficiently when using CAM software.

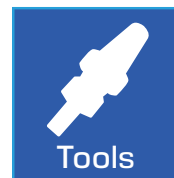


CAM programmers must frequently perform the same tasks repeatedly. ToolManagerIQ™ v2023 systematizes these frequent tasks. Quickly learn which tools are being used in a particular CNC machine. Know which tools are available, and on the shelf in the workshop. No more browsing hundreds of windows, folders, and files just to find certain fixture models. Streamline day-to-day tasks with the time-saving features of ToolManagerIQ.™

- Fully integrated software
- Uses the GibbsCAM interface
- Easily access CNC machining tools
- TooliD's seamless barcode scanning technology
- Supports multiple languages



NATIVE GIBBSCAM 2023*
ToolManagerIQ™ is available right from the GibbsCAM Commands Tool Bar.



TOOL HANDLER
Flexible TDM includes tool holders and holder classes that apply to specific tool holders.



FIXTURE DATA
The TDM fixture data center, with editable fixture assembly input, allows for auto and manual customization.



SUPPLIER DATA
Manage tool inventory and supplier information locally.

MULTIPLE LANGUAGES SUPPORTED
TMIQ makes it even better for everyone – Available in English, French, Swedish, Finnish, Czech, German, Spanish, and Japanese.

*Multifunction indexable drill and intermediate tooling not supported yet.

Visit ToolManagerIQ.com or call 1-888-289-5617.

Stay focused.
TMIQ improves overall work flow.

The features of better.



Home Tool Management

| Y | Name | Barcode |
|---|----------|---------|
| | 3" FM | |
| ▶ | 1/2" REM | |
| | 3/8" FEM | |
| | 5/8" SD | |
| | 1/4" DR | |
| | 1/8" TM | |

1/2" REM - Details



TOOLED FOR CONVENIENCE

TMIQ's TooliD seamlessly works with barcode scanning equipment to input data quickly. Plus, individually customize the tool section.



Home Fixture Management

| Y | Fixture Name |
|---|--------------------------------|
| ▶ | 3 JAW CHUCK |
| | RADIUS 60MM - BOTTOM RAIL |
| | RADIUS 60MM - CLAMP 1 SOFT JAW |
| | RADIUS 60MM - CLAMP 1 |
| | RADIUS 60MM - CLAMP 2 SOFT JAW |
| | RADIUS 60MM - CLAMP 2 |
| | 6" VISE |

3 JAW CHUCK - Details



FIXTURE PERFECT

Easily manage fixtures with auto and manual customization. Check and edit details, including visual identification of every fixture in the toolbox.



Home Supplier Management

| Y | Name |
|---|------------------|
| | none |
| ▶ | SANDVIK COROMANT |
| | OSG |
| | KENNAMETAL |
| | ISCAR |
| | HARVEY |
| | DESTINY |
| | GARR |

SANDVIK COROMONT - Details



Sandvik Coromant
295 Maple Lane
Mebane, NC
27302, USA

SUPPLY & DEMAND

Stay on top of supplier details and stay on-track with day-to-day demands of tool management. Quickly replace and update your tool crib conveniently from a single location.

NEW FOR 2023

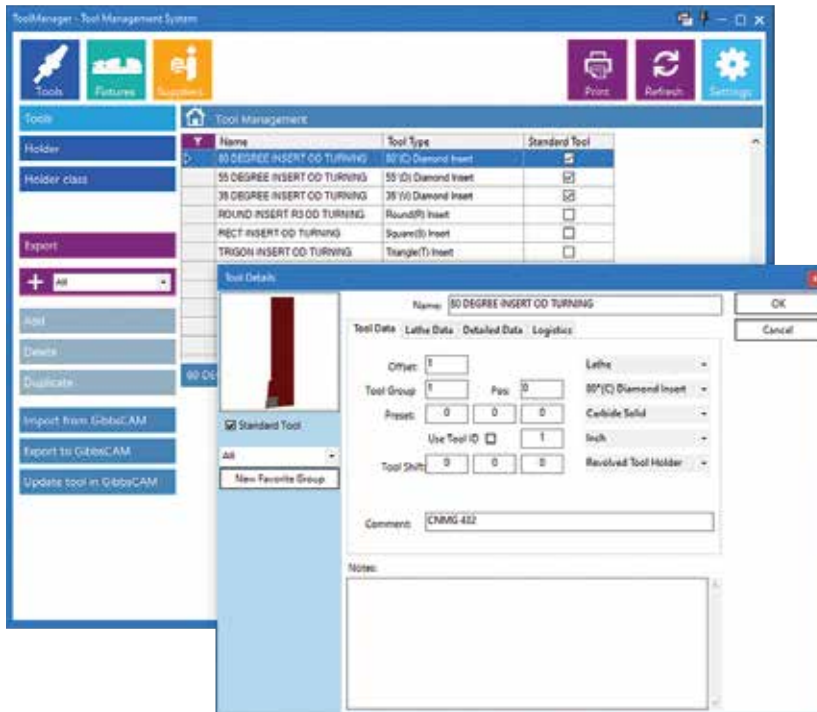
ToolManagerIQ™ supports even more - the Tangent and Tapered Barrel Mill, Prime Turning, Linear & Rotary Broaching, and Probing tools.



Visit ToolManagerIQ.com or call 1-888-289-5617.

Get all the details.
And never skip a beat.

Capture better.



◀ **CENTRALIZED TOOL LIBRARY**
Import and export tools, holders, and fixtures. TMIQ universally updates the entire TDM-SQL database.

◀ **CUSTOMIZED TOOL DATA**
Add tools manually and still edit automated imports.



◀ **THE VIRTUAL TOOL CRIB**
ToolManagerIQ's ROI is immediate. Whether you manage hundreds or thousands of tools, your team can quickly and easily access any tool, get detailed information, including its location and supplier details. It's all captured right here, in TMIQ's virtual tool crib.

◀ **UNIVERSAL DATA CAPTURE**
Team Members can update, add notes, or edit tool details as required, knowing the information is managed and shared in real-time and universally accessible.

Visit ToolManagerIQ.com or call 1-888-289-5617.

Ready. Get set. Go.
TMiQ is loaded.

Prepare for *better*.

100+ PRE-LOADED TOOLS

Whether your team is using the stand-alone, or GibbsCAM version, they're ready to go. TMiQ supports better with over 100 preloaded tools, all of which encompass metrics and imperial milling and turning tools.

ADDED BONUS

TMiQ is designed to make it even better - a sampling of fixtures and chucks are included.



Get 5-Star *better*, with ToolManager*Q*.™



ToolManager*Q*™ streamlined interactions...

Between our programmers and tool attendants saving us countless hours. With everyone working from one database we know exactly which tools, holders, and fixtures we have on hand and where to find them. Importing them into Gibbs with a few mouse clicks has reduced programming time as well. A must-have for any shop.

ToolManager*Q*™ is efficient and easy-to-use...

The software quickly became indispensable for the whole team in the workshop.

Discover for yourself how ToolManager*Q*™ is *better*.

Try it now, FREE for 14 days.

©2023-2024. ToolManager*Q*™ All rights reserved. All product names, logos, brands, trademarks & registered trademarks are property of their respective owners. Sandvik Coromant (295 Maple Lane, Mebane, NC 27302, USA) & MegaTech logos and/or products are used with permission.

Visit [ToolManagerQ.com](https://www.ToolManagerQ.com) or call 1-888-289-5617.