



# GibbsCAM<sup>®</sup> 13

Version 13 : February 2019

---

## NLO Installation

# Proprietary Notice

This document contains proprietary information of 3D Systems, Inc. (“3DS”) and is to be used only pursuant to and in conjunction with the license granted to the licensee with respect to the accompanying licensed software from 3DS. Except as expressly permitted in the license, no part of this document may be reproduced, transmitted, transcribed, stored in a retrieval system, or translated into any language or computer language, in any form or by any means, electronic, magnetic, optical, chemical, manual or otherwise, without the prior expressed written permission from 3DS or a duly authorized representative thereof.

It is strongly advised that users carefully review the license in order to understand the rights and obligations related to this licensed software and the accompanying documentation.

Use of the computer software and the user documentation has been provided pursuant to a 3DS licensing agreement.

Copyright © 1993 - 2019 3DS. All rights reserved. The Gibbs and GibbsCAM logos, GibbsCAM, Gibbs, Virtual Gibbs, and “Powerfully Simple. Simply Powerful.” are either trademark (s) or registered trademark(s) of 3DS in the United States and/or other countries. All other trademark(s) belong to their respective owners.

Portions of this software and related documentation are copyrighted by and are the property of Siemens Product Lifecycle Management Software Inc.

Microsoft, Windows, and the Windows logo are trademarks, or registered trademarks of Microsoft Corporation in the United States and/or other countries.

Contains PTC Creo GRANITE Interoperability Kernel by PTC Inc. All PTC logos are used under license from PTC Inc., Needham, MA, USA. 3DS is an independent Software Provider.

Portions of this software © 1994-2019 Spatial Technology Inc. / Dassault Systèmes / Spatial Corp.

Portions of this software © 2001-2019 Geometric Software Solutions Co. Ltd.

Contains Autodesk® RealDWG by Autodesk, Inc., © 1998-2019 Autodesk, Inc. All rights reserved.

DMG MORI Models provided in conjunction with GibbsCAM © 2007-2019 DMG Mori Seiki Co., Ltd.

Contains VoluMill™ and VoluTurn™ by Celeritive Technologies, Inc. © 2007-2019 Celeritive Technologies, Inc. All rights reserved.

This Product includes software developed by the OpenSSL Project for use in the OpenSSL Toolkit (<http://www.openssl.org/>). This Product includes cryptographic software written by Eric Young (eay@cryptsoft.com).

Portions of this software © MachineWorks Ltd.

Portions of this software and related documentation are copyrighted by and are the property of Electronic Data Systems Corporation.

Other portions of GibbsCAM are licensed from GibbsCAM licensors, which may not be listed here.

# Contents

---

<b>NETWORK LICENSING</b> .....	<b>4</b>
What Remains the Same .....	4
What Changed .....	4
Operating Systems Supporting CimLM .....	4
<b>Overview of Network License Installation</b> .....	<b>4</b>
Condensed Steps: To Set Up the License Server .....	5
Condensed Steps: To Install The Client Software .....	5
<b>NLO Step 1 - Setting Up The Server</b> .....	<b>6</b>
<b>NLO Step 2 - Install the Client Software On Each Node</b> .....	<b>8</b>
<b>Tools for Managing and Monitoring Licenses</b> .....	<b>9</b>
License Manager .....	9
License Server Monitor .....	10
<b>Frequently Asked Questions on NLO</b> .....	<b>11</b>

# Network Licensing

In this release, GibbsCAM licensing is handled differently from version 12 and before. These changes mainly affect NLO (Network License Option).

## What Remains the Same

As before, GibbsCAM Network Licensing (NLO) establishes a network license server that maintains a software key for each GibbsCAM product option purchased from 3D Systems. These software keys (or “licenses”) are distributed to nodes across a network to enable the workstations (nodes with installed 3D Systems application software) to run the purchased module options. NLO is an alternative to hardware keys: When a client runs the GibbsCAM application software, a software key is “checked out” from the license server. There is no limit to the number of GibbsCAM seats installed on the network, only a limit to the number that can be used concurrently with each license server. Each client’s license file (\*.cm1) can be created and installed through the Internet or, if the workstation lacks Internet access, by electronic or physical mail.

## What Changed

GibbsCAM NLO now uses Cimatron License Manager (CimLM) instead of Reprise License Manager (RLM). This change affects all customers using GibbsCAM NLO.

**Important:** If you use CimLM to serve licenses for Cimatron products, you cannot use the same machine to serve licenses for GibbsCAM products. The server software must be installed on separate machines with different IP addresses.

## Operating Systems Supporting CimLM

Cimatron License Server requires Windows Server 2008 R2 or Windows 7 (“NT 6.1”) or later. Although this includes desktop platforms like Windows 8 (“NT 6.2”), Windows 8.1 (“NT 6.3”), and Windows 10, we recommend Windows Server (2008 R2, 2012, 2012 R2, 2016, or 2019) if more than five users will be simultaneously connected to the license server.

## Overview of Network License Installation

Installation of the Network License Option (NLO) is a two-phase process: In Phase 1, you set up the server. In Phase 2, you install and register the client software on each node. For condensed steps, see below; for details, see [“NLO Step 1 - Setting Up The Server”](#) on page 6.

## Condensed Steps: To Set Up the License Server

1. With Administrator privileges, on the machine that will be serving GibbsCAM licenses – *which must not be the same machine as one that serves Cimatron licenses* –, run the installer setup file:

`LicenseServer_setup_8.<x>.<y>.<z>.exe`

to install the License Server software, Registration Tool, and support files.

This installer setup file can be downloaded from Gibbs Online ([online.gibbscam.com](http://online.gibbscam.com)) and elsewhere.

2. From the folder where you installed the License Server software (default `C:\Program Files\3D Systems\License Server\`), run `RegistrationTool.exe`.
3. When the Licensing Utility window appears :

- a. For License Registration Type, choose **Network License Server** (the *third* choice).

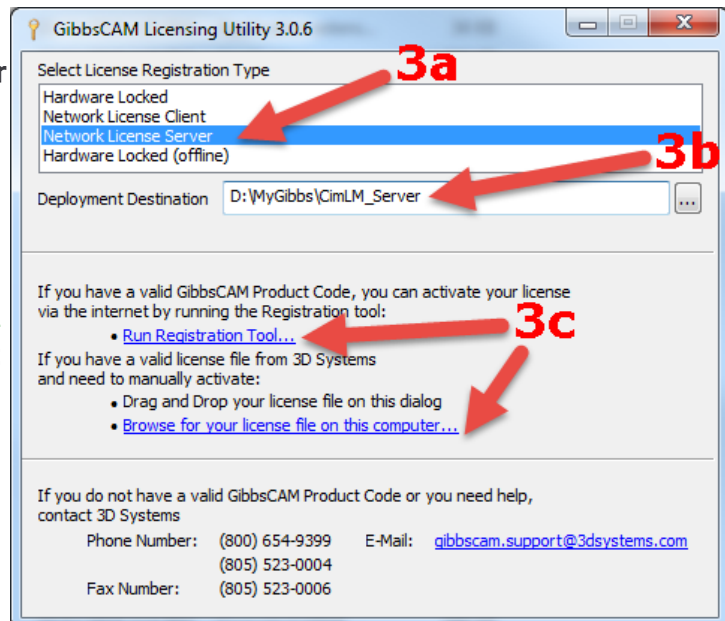
- b. For Deployment Destination, enter or browse to a writable folder.

- c. Either:

- Browse for an existing `*.cm1` license file on your computer;

Or, if you do not yet have a `*.cm1` file:

- Click the Run Registration Tool link and then, in the Server License Registration Tool window, enter (or copy-and-paste) your 20-character product license code.



For details, see “[NLO Step 1 - Setting Up The Server](#)” on page 6.

## Condensed Steps: To Install The Client Software

1. Install the GibbsCAM application software on the client machine. For instructions on installing the software, see [Installing the GibbsCAM System](#).
2. Ensure that the License Server is running on the license server machine and that the client can connect to it, and then register GibbsCAM on the client machine.

For details, see “[NLO Step 2 - Install the Client Software On Each Node](#)” on page 8.

# NLO Step 1 - Setting Up The Server

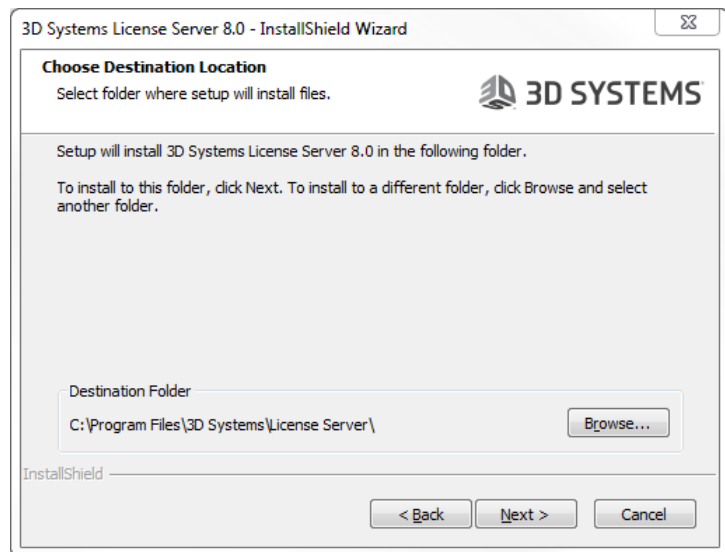
*Before you begin:* On the machine where you will install the License Server, you must have administrator privileges. The installer setup file `3D_Systems_License_NLO_Server_v8.<x>.<y>.<z>.exe` must be available. This can be downloaded from <https://online.gibbscam.com> (under **Software Downloads**, click the Tools link) or it can be loaded from the product media in folder `\Content\NLO Registration\`.

Before installing or modifying NLO Server, ensure that the firewall service is started (Services (Local) > Windows Firewall, Status = Started). If this machine has an older version of 3D Systems License Server 8.0 installed, uninstall it. Then, run the NLO installer. After the installation/modification is complete, you can stop your firewall service if necessary.

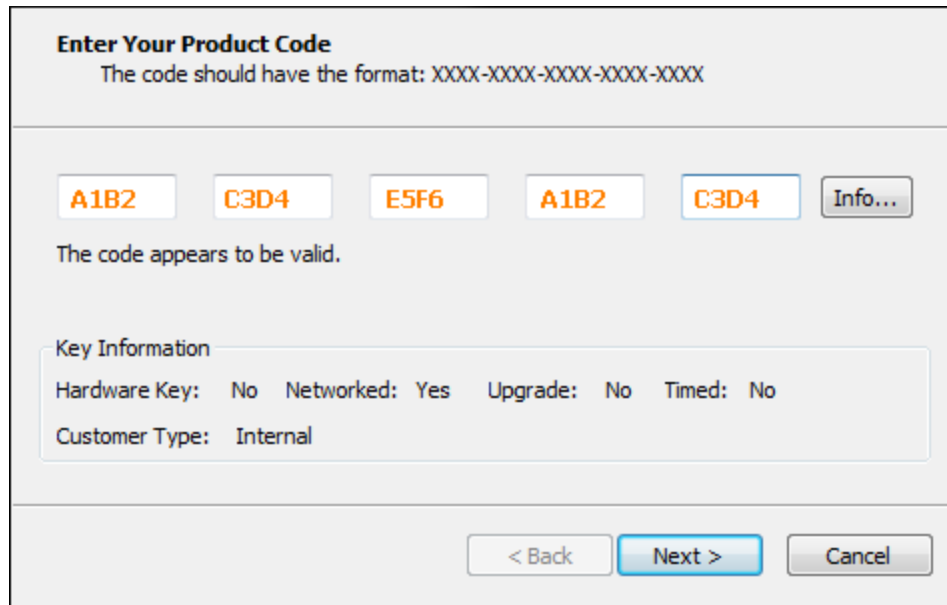
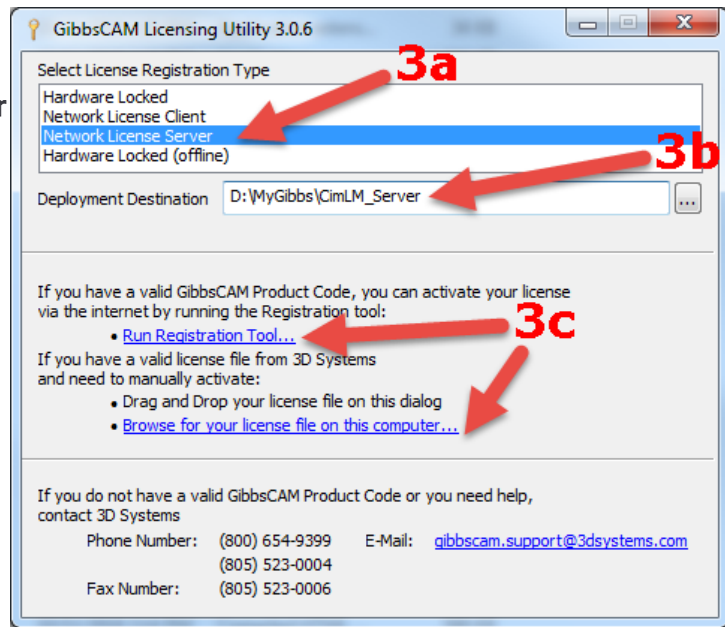
1. Run the executable to install the License Server software.

The steps are as follows:

- (a) UAC: Yes;
  - (b) Select the language you prefer;
  - (c) For **Welcome**: Click Next;
  - (d) For **Destination Folder**: Browse to or accept a folder and click Next;
  - (e) Click **Install**.
2. From the folder where you installed the License Server software, run `RegistrationTool.exe`.
  3. When the **Licensing Utility** window appears



- a. For License Registration Type, choose **Network License Server** (the *third* choice).
- b. For Deployment Destination, enter or browse to a writable folder.
- c. Do one of the following:
  - If you do not already have a \*.cm1 license file on your computer: Click the Run Registration Tool link and then, in the Server License Registration Tool window, enter (or copy-and-paste) your 20-character product license code:



When the activation is complete, a license file, `license-<customer_id>-<server_number>-L.cm1`, is created in your deployment directory.

- Or, if you already have a \*.cm1 license file on your computer, use the Browse link to find and select it.

## NLO Step 2 - Install the Client Software On Each Node

*Before you begin:* Make sure the license server machine is running the License Server software and that the client machine (workstation) has a network connection to it.

1. On the client machine (workstation), install the GibbsCAM software, using the same product code that was used for installing the server. For step-by step-instructions, see [Installing the GibbsCAM System](#).

2. Register GibbsCAM for this client workstation.

You can do this manually at any time by running the Registration Tool. Or, if you launch GibbsCAM, it will display the [License Installation](#) dialog to prompt you for the product code.

Use the same product code that was used for the server. On NLO client machines, you are not prompted for contact information.

3. After you enter the product code, click [Activate Product](#) to complete the license deployment.

The license data will be retrieved from the Gibbs Activation Service and placed in the appropriate Activation Data folder.

4. Repeat the previous steps (installing the GibbsCAM software and registering the product code) for each GibbsCAM client of the license server machine.

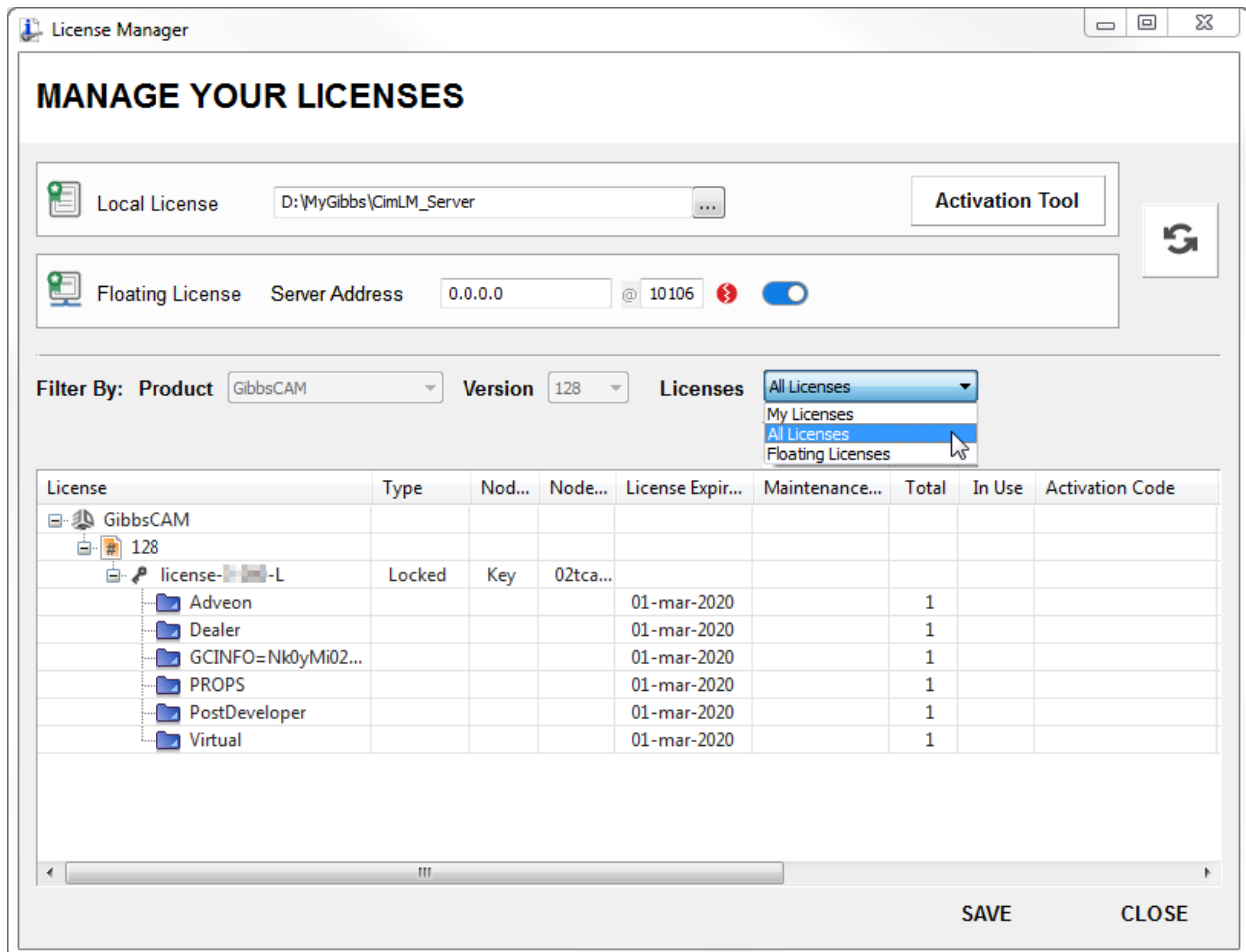


# Tools for Managing and Monitoring Licenses

## License Manager

From the `License Server\` folder (`C:\Program Files\3D Systems\License Server\` is the default), run `CimLicManager.exe`.

*Result:* The License Manager window appears.



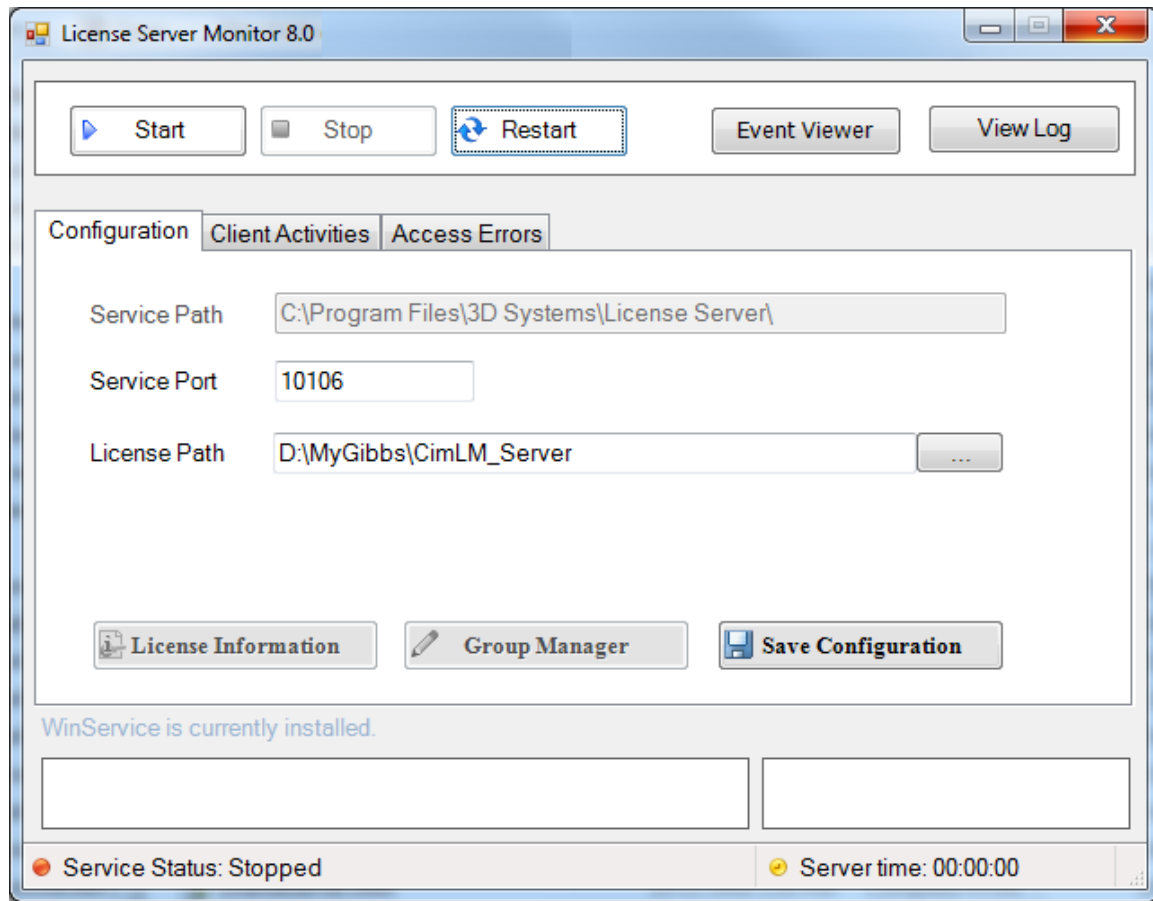
In it, you can:

1. View or change the local license folder.
2. View or change the server address and port.
3. See details on the product versions and modules for which this server is serving licenses.

## License Server Monitor

From the `License Server\` folder (`C:\Program Files\3D Systems\License Server\` is the default), run "`CimService Monitor.exe`".

*Result:* The License Server Monitor window appears.



In it, you can:

1. Start, stop, or restart the License Server.
2. Run the system Event Viewer.
3. View a log of all actions taken by the License Server.
4. Configure some aspects of the License Server, such as its port and path.

---

# Frequently Asked Questions on NLO

- Question: How can I find out more about License Server management and tuning?

*Answer:* Online help is supplied in the folder where you installed the License Server software. The filename of the online help file is [LicenseServer.chm](#)

- Question: Can I activate if I don't have an Internet connection?

*Answer:* Yes. The Internet activation process simply automates the process of requesting, creating, and installing the license file on the client computer, but there is a procedure for activating without a live Internet connection. It uses the same registration process as the live connection.

- Question: Can the same machine serve licenses for both GibbsCAM and Compost?

*Answer:* Yes, but with a caveat.

***If you use NLO on one machine for multiple products:*** If you have licenses for two or more GibbsCAM products served by a single machine, such as licenses for both GibbsCAM and Compost, then all such license files must have the same start and end dates. If the start dates or end dates mismatch, then one license file might overwrite another.

- Question: Can the same machine serve licenses for both GibbsCAM and Cimatron?

*Answer:* No, not at this release. If you use CimLM to serve licenses for Cimatron products, you cannot use the same machine to serve licenses for GibbsCAM products. The server software must be installed on separate machines with different IP addresses.