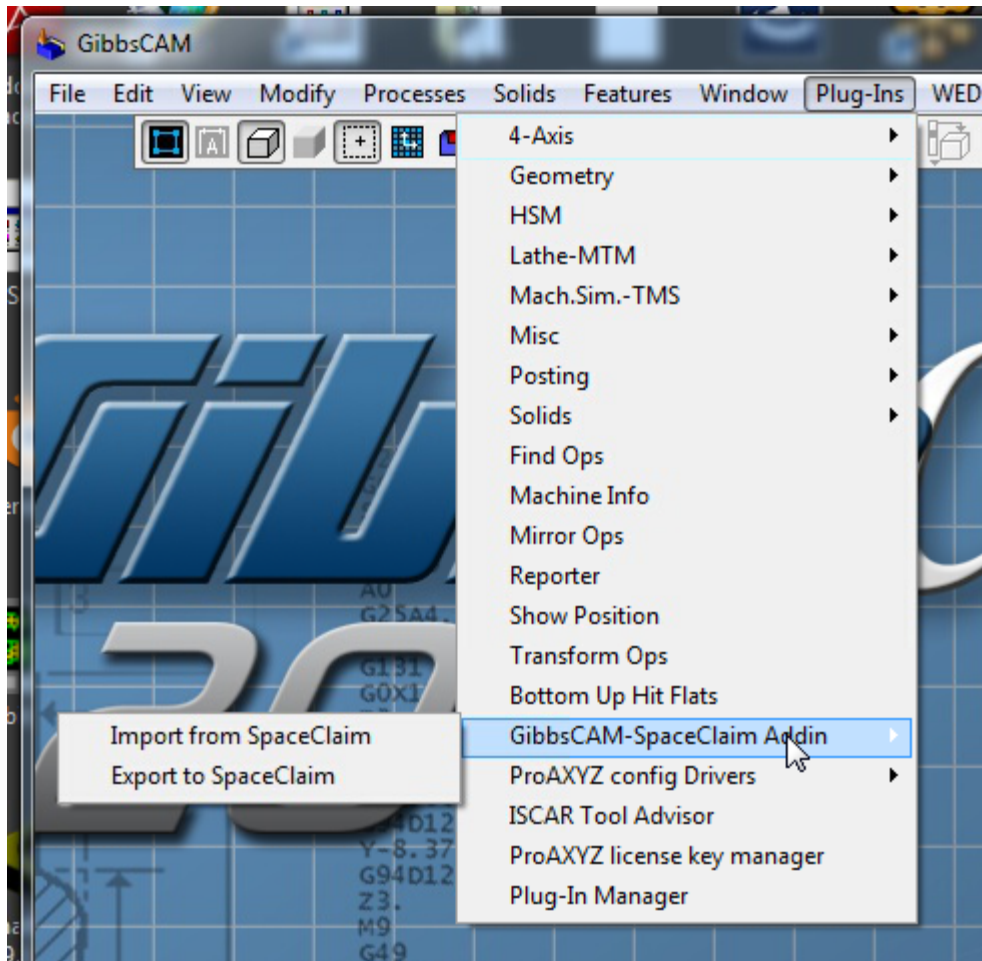


GibbsCAM-SpaceClaim Plugin Installation & Configuration

Installation

1. Make sure you are an admin with all read/write permissions
2. Unzip the Gibbs_SC_Addin.zip file downloaded from:
<http://s3.amazonaws.com/files.spaceclaim.com>
3. The unzipped files contain another zip file called SpaceClaim-GibbsCAM Plugin.zip
4. Unzip SpaceClaim-GibbsCAM Plugin.zip
5. Open the extracted SpaceClaim-GibbsCAM Plugin folder
6. Choose the appropriate bit level (32 or 64) and open that folder
7. Copy everything in this folder (all dll files, config files, and language folders) and paste them into a new folder called "SpaceClaim" in <GibbsCAM installation directory>\Plugins
8. Right click on each of these dll and config files and go to Properties. Click the "Unblock" button if it appears
9. Start GibbsCAM and SpaceClaim should appear under the Plugins dropdown menu
Plug-Ins > GibbsCAM-SpaceClaim Addin



Configuration

Transfer format from SpaceClaim can be configured via SpaceClaimAddInBridge.dll.config, inside the <setting name="FromSpaceClaimFormat" serializeAs="String"> tag:

```
<?xml version="1.0" encoding="utf-8" ?>
<configuration>
  <configSections>
    <sectionGroup name="userSettings"
type="System.Configuration.UserSettingsGroup, System, Version=4.0.0.0, Culture=neutral,
PublicKeyToken=b77a5c561934e089" >
      <section name="SpaceClaimAddInBridge.Properties.Settings"
type="System.Configuration.ClientSettingsSection, System, Version=4.0.0.0,
Culture=neutral, PublicKeyToken=b77a5c561934e089"
allowExeDefinition="MachineToLocalUser" requirePermission="false" />
    </sectionGroup>
  </configSections>
  <userSettings>
    <SpaceClaimAddInBridge.Properties.Settings>
      <setting name="Setting" serializeAs="String">
```

```

        <value />
    </setting>
    <setting name="FromSpaceClaimFormat" serializeAs="String">
        <value>AcisBinary</value>
    </setting>
    <setting name="ToSpaceClaimFormat" serializeAs="String">
        <value>ParasolidText</value>
    </setting>
</SpaceClaimAddInBridge.Properties.Settings>
</userSettings>
</configuration>

```

Available values for transfer format are as follows:

Option value	Required SpaceClaim Data Exchange License
AcisText, AcisBinary	None – Engineer license only
ParasolidText, ParasolidBinary	Data Exchange II
STEP	None – Engineer license only

Default transfer format is ParasolidText if config file is not found.

"ToSpaceClaimFormat" will always use "ParasolidText" regardless of the value set in the config file.